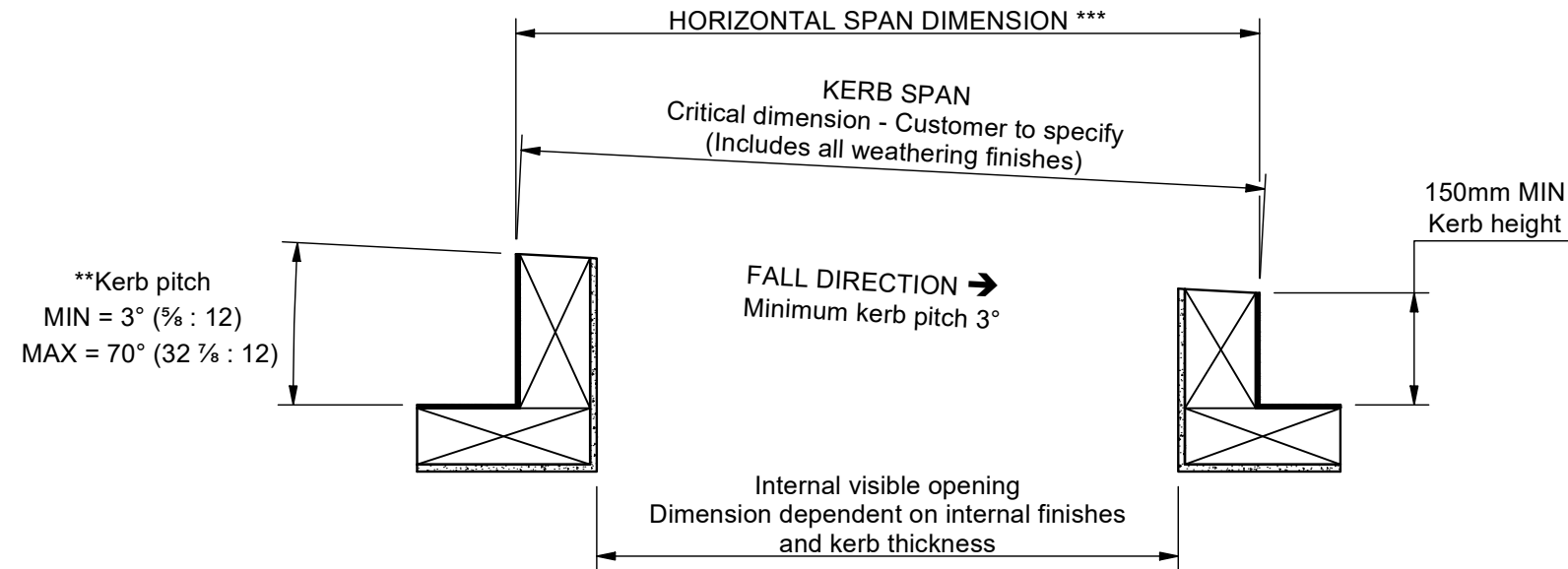


**For pitches exceeding 5 degrees the kerb top should be constructed perpendicular to the upstand - ref S0009

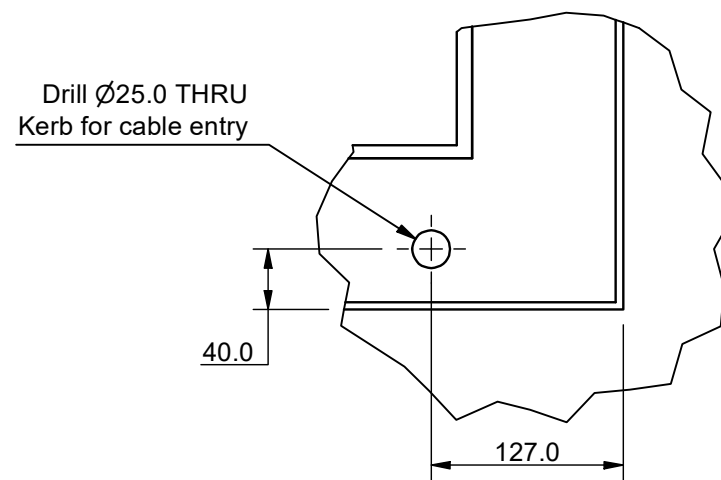
Section A-A (Scale 1 : 10)

View along fall



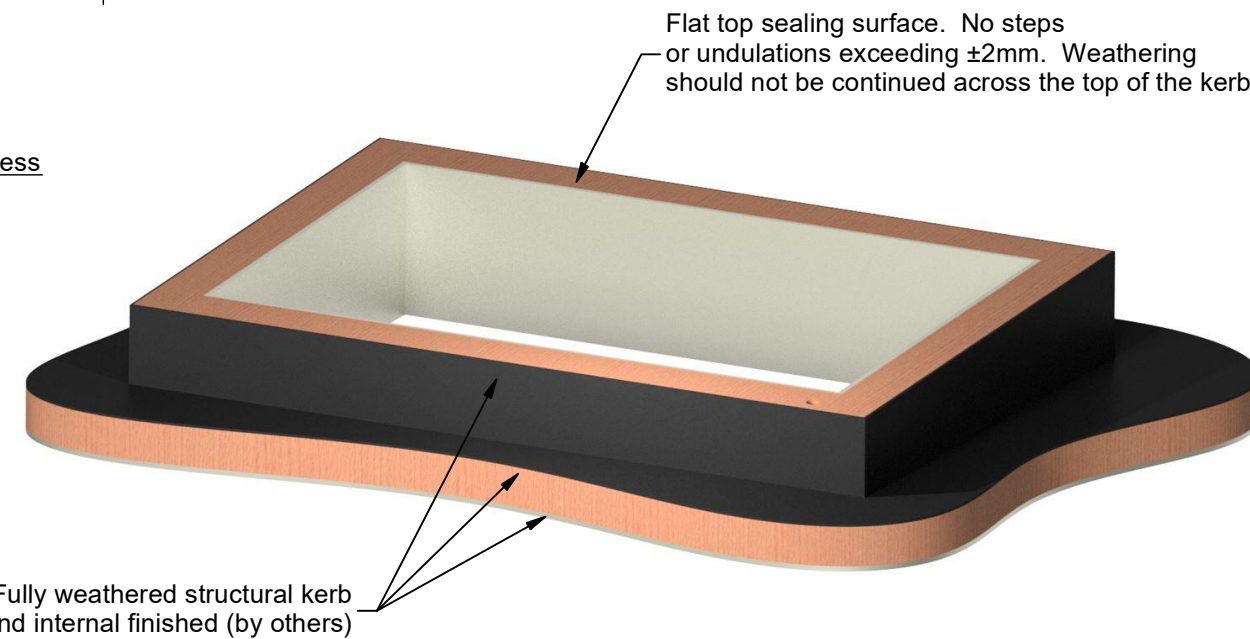
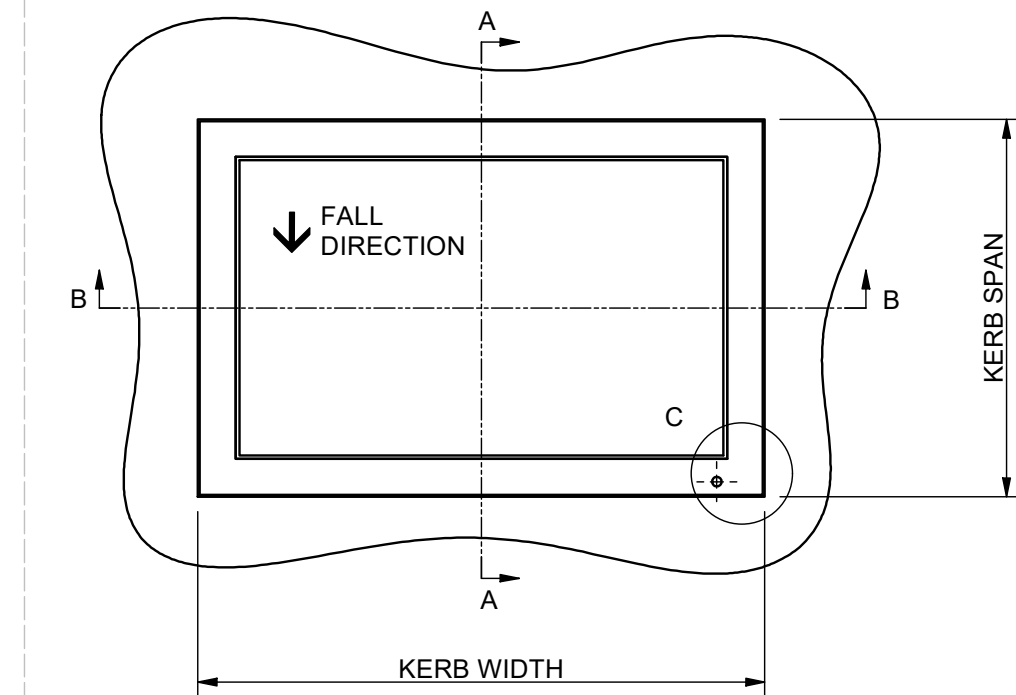
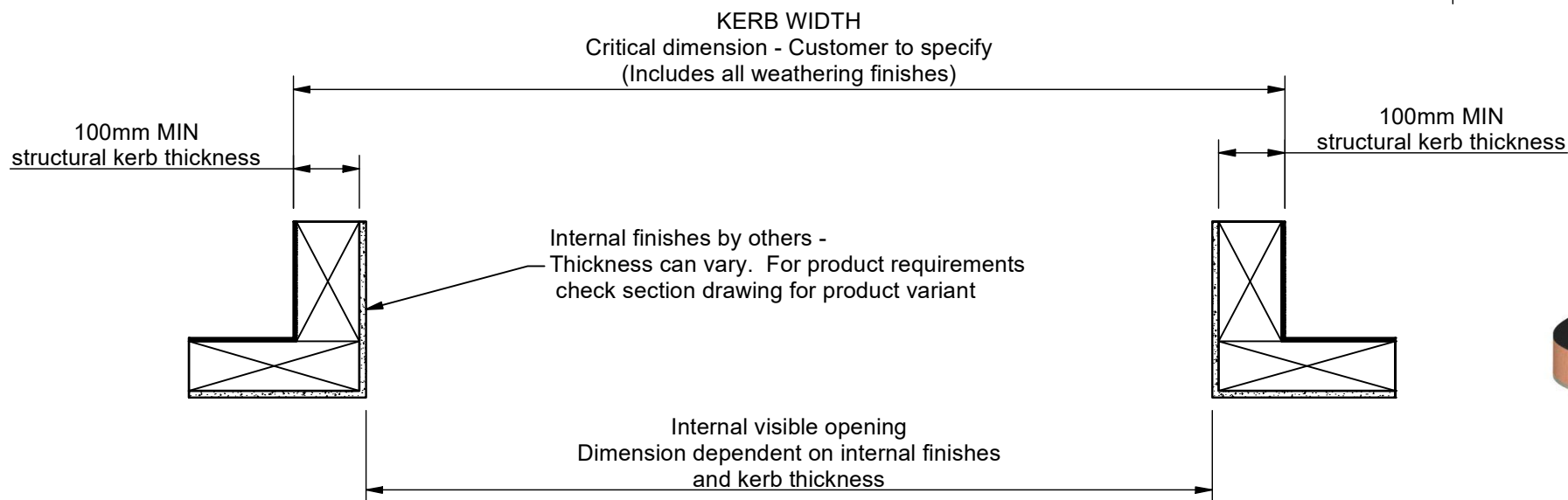
Detail C (Scale 1 : 5)

Cable positions



Section B-B (Scale 1 : 10)

View across fall



*** Dimension calculated as:
SPAN x COSINE(PITCH°)
e.g. 2000cos(3) = 1997



Saw Mills Road
Diss
Norfolk
IP22 4RG
Tel: +44 (0)333 8000 881
Fax: +44 (0)333 8000 882
Email: sales@glazingvision.co.uk
Website: www.glazingvision.co.uk

IT IS GLAZING VISION'S POLICY TO CONTINUOUSLY DEVELOP AND IMPROVE OUR PRODUCTS. WE THEREFORE RESERVE THE RIGHT TO MODIFY OR CHANGE THE DETAIL DESIGN AT OUR DISCRETION AND WITHOUT PRIOR NOTICE. THIS DRAWING IS COPYRIGHT AND THE SOLE PROPERTY OF GLAZING VISION LTD. THE DESIGNS/INFORMATION IT CONTAINS ARE PRIVATE AND CONFIDENTIAL. IT MUST NOT BE COPIED, EXHIBITED OR COMMUNICATED TO THIRD PARTIES FOR ANY PURPOSE OTHER THAN THAT FOR WHICH IT WAS ISSUED WITHOUT THE WRITTEN PERMISSION OF GLAZING VISION LTD.

Third angle projection unless otherwise noted.
Tolerances:
Whole numbers = ±1mm
One decimal place = ±0.5mm
Two decimal places = ±0.2mm
All angles 90±0.5 degrees unless specified
IF IN DOUBT - ASK! DO NOT SCALE
Supplier to deburr & remove sharp corners

Rev	Revision Description	Drawn/Date
D	Removed second hole cable entry (25mm)	HTT 26.08.21
C	Kerb pitch amended max. 10 deg to 70 deg.	HTT 06.02.20

Product: 401 - GV Standard VisionVent		Checked By:
Description: Kerb detail		JSL
Materials: N/A	Drawn By: JamesB	Check Date: 26.08.21
Finish: N/A	Drawn Date: 09.12.13	
Weight: 228.102 kg	Quantity: N/A	
Scale: As above	Drawing No: 401-ASS-401	