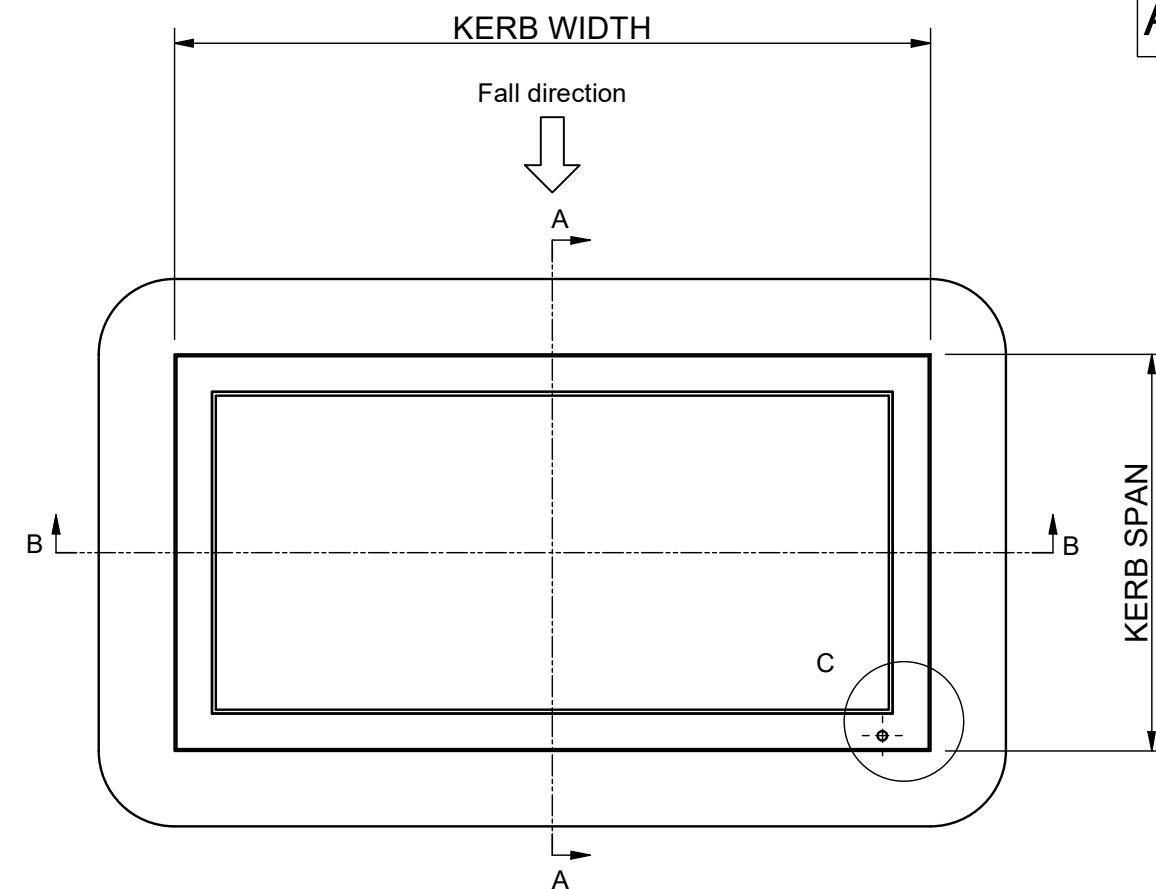
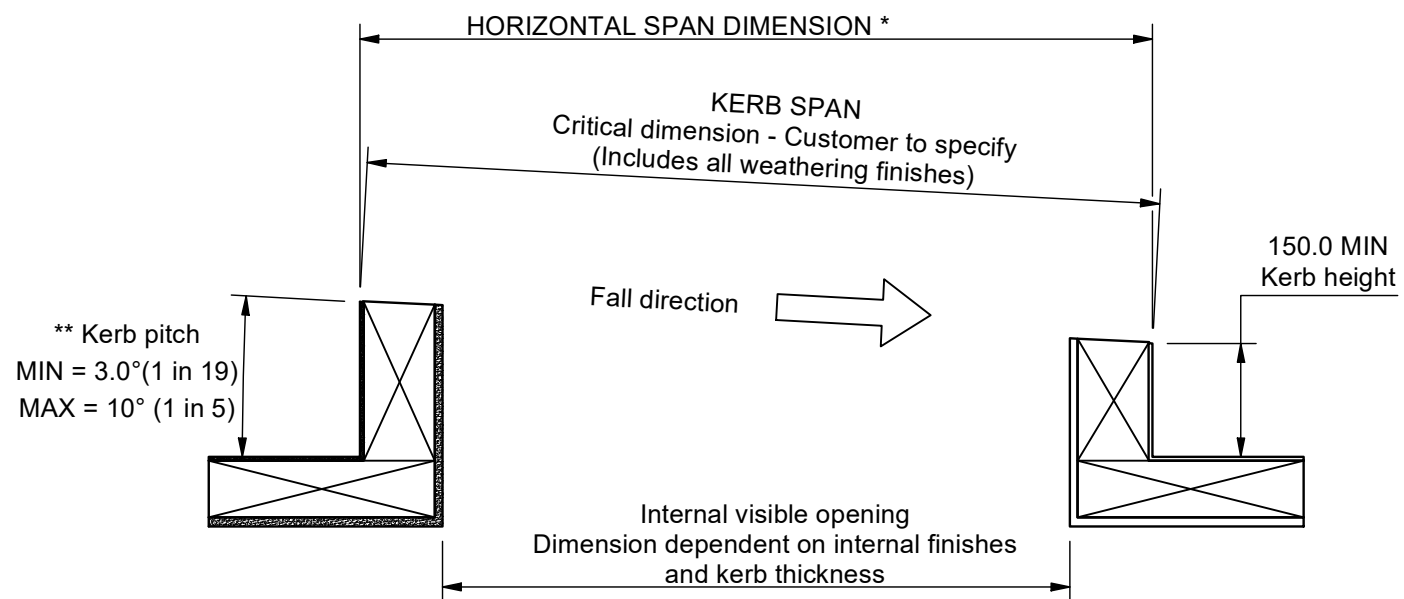


**For pitches exceeding 10 degrees the kerb top should be constructed perpendicular to the upstand - REF S0009

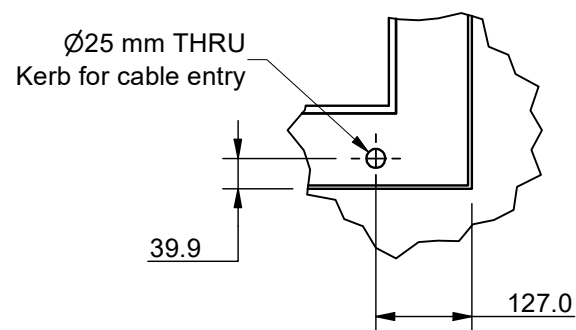
Section A-A (Scale 1 : 10)

View along fall



Detail C (Scale 1 : 10)

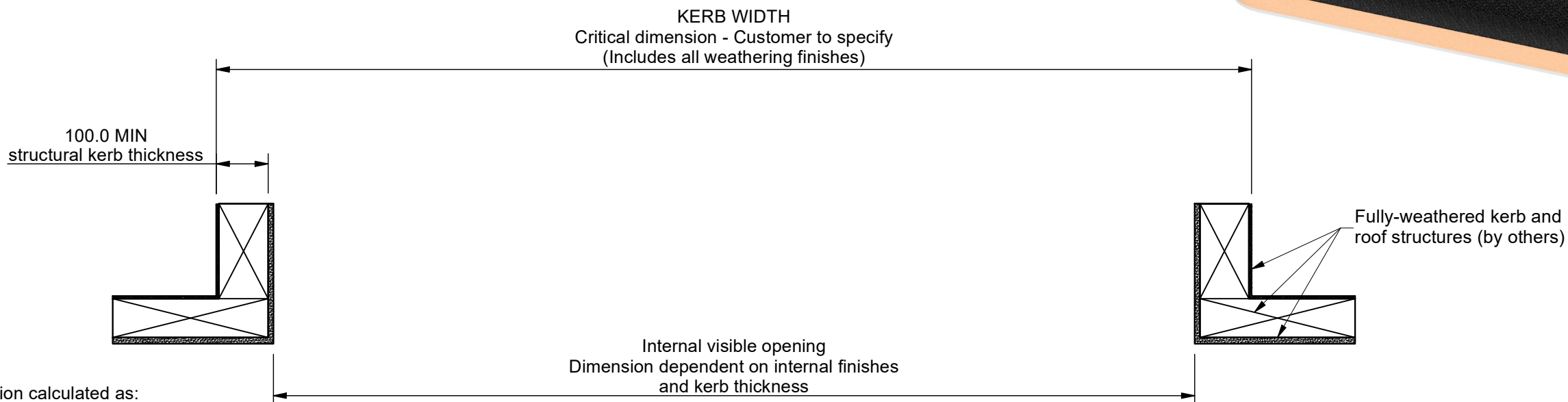
FOR ELECTRIC OPTION ONLY



Flat top sealing surface. No steps or undulations exceeding ±2mm. Weathering should not be continued across the top of the kerb

Section B-B (Scale 1 : 10)

View across fall



* Dimension calculated as:
SPAN x COSINE(PITCH°)
e.g. 2000cos(3) = 1997

Rev	Revision Description	Drawn/Date
B	Removed second hole cable entry (25mm).	HTT 02.09.21
A	Kerb pitch note changed from 10 deg to 5 deg.	SW 08.02.17

Product: 407 - GV Standard Skyhatch		Checked By: JSL
Description: Kerb detail		Check Date: 02.09.21
Materials: N/A	Drawn By: JWL	Drawing No: 407-ASS-002
Finish: N/A	Drawn Date: 08.10.15	
Weight: N/A	Quantity: N/A	
Scale: 1:20 1:10		