

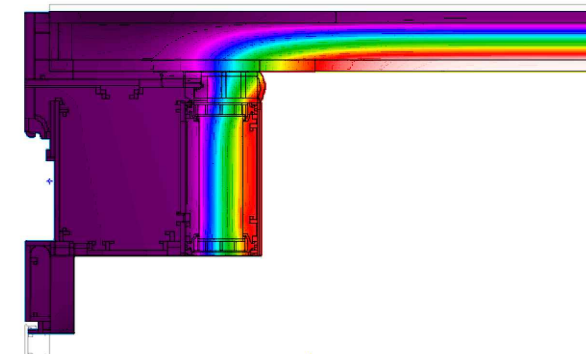
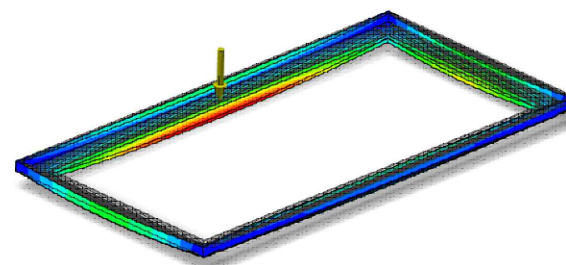
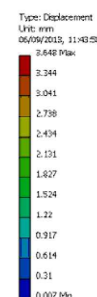
**SKYHATCH**  
ELECTRICALLY OPERATED HINGED ROOFLIGHT  
REQUIRES WEATHERED UPSTAND (NOT SUPPLIED)  
REFER TO DRAWINGS 407-SDD-UK-002, 407-SDD-UK-003,  
407-SDD-UK-004, 407-SDD-UK-005, 407-SDD-UK-006 FOR DETAILS

Unit can be opened fully for access or various angles for ventilation as required

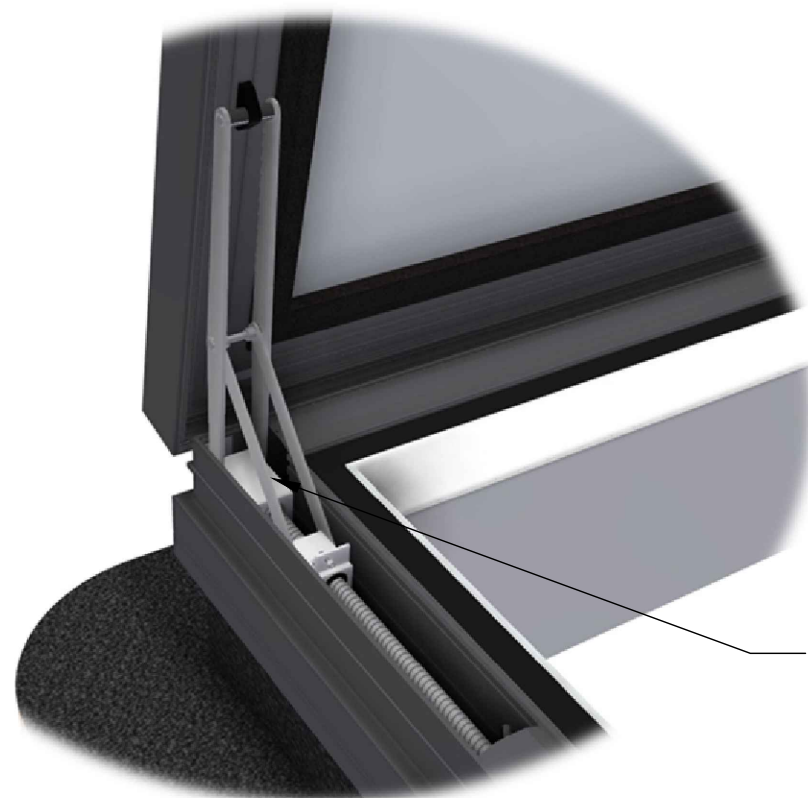
Hinge should always be at the top of the fall



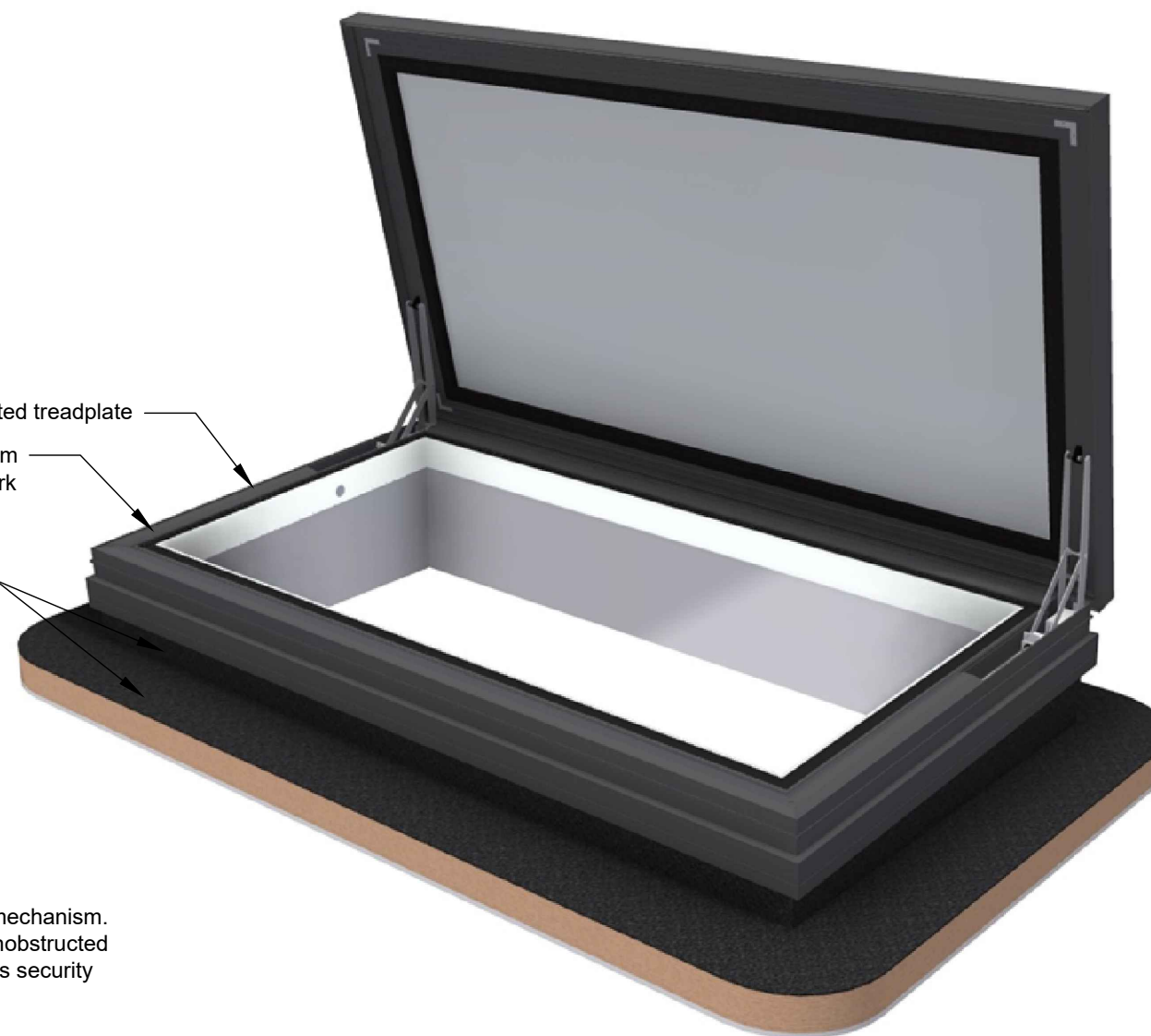
**FEA MODELED FOR STRUCTURAL INTEGRITY AND THERMAL EFFICIENCY**



**MECHANISM DETAIL VIEW**



Powder coated treadplate  
Intelligent electronic control system concealed within framework  
Fully weathered roof top and upstand structure (by others)  
Concealed electro-mechanical opening mechanism. Side-mounted synchronised pair allow unobstructed views through the leading edge as well as security for the lid



ESTIMATED WEIGHT	N/A	SCALE	Not to scale
------------------	-----	-------	--------------

REVISION	DESCRIPTION	NAME/DATE
-	Initial Release	DRA 07/May/2025

PROJECT Skyhatch Electric	
TITLE / DESCRIPTION General Arrangement	CHECKED JOB 07/May/2025
DRAWING NO. 407-SDD-UK-001	SHEET 1 OF 1